



# Introducing our Foundation



Making Education Relevant

[www.edge.co.uk](http://www.edge.co.uk)

# Making Education Relevant

**The world is changing fast – education needs to keep up.**

## Who are we?

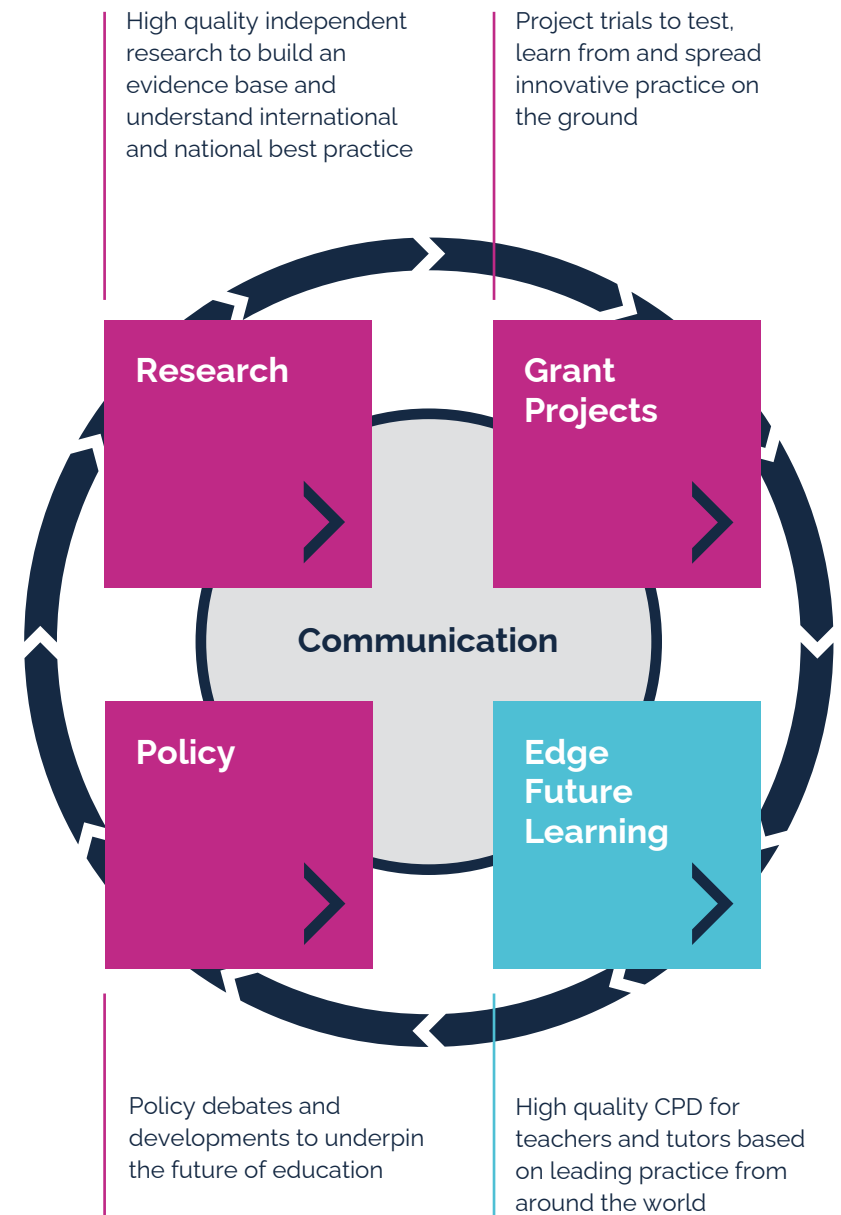
Edge is an independent, politically impartial foundation, working to inspire the education system to give all young people across the UK the knowledge, skills and behaviours they need to flourish in their future life and work. We work right across the UK with strong international links.

## Our vision

We believe that all young people should have the opportunity to achieve their potential by having access to a relevant and engaging education. This can be achieved through high quality professional and vocational and technical education; a broad, flexible and engaging curriculum that includes real world learning; and rich relationships between education, employers and the community.

## Our approach

We work in collaboration with non-governmental organisations, government departments and academic establishments and gather evidence through research, trials and projects. We use this to lead the debate around future policy and changing practice on the ground.



# Where do we stand on education?

## Schools and 14-19 Education – Coherent, Unified, Holistic



We want to equip young people to make good choices, to be leaders, community focussed, to stand up for what they think is right but also to learn skills like team work, resilience and empathy. To do this, we need a 14-19 phase of education that is **coherent, unified** and **holistic** based on a broad and balanced curriculum that makes learning relevant to the work place and real life.

## Apprenticeships – Broader, Higher Quality, Better Prepared

Our apprenticeship system plays a vital part in our technical and vocational education landscape but they have the potential to become even more ambitious and relevant to the skills needed for the 21st century. Rather than introducing new measures, we should scale up existing good practice and focus on **high quality, broad transferable skills** and a **good preparation** for the onset of the fourth industrial revolution and green economy, working particularly with small businesses.



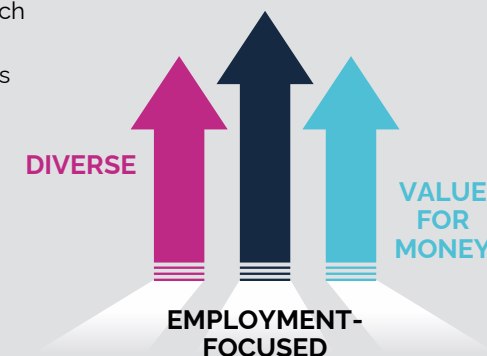
## Further Education – Defined, Career and Skills Focused, Collaborative



Against the backdrop of a changing economy, Brexit, and the urgency of Covid-19, it is clear more than ever before that we need our FE sector to be at the forefront of social and economy recovery. To do this, we want to see the FE sector become more **defined, careers and skills focused**, and **collaborative**, with colleges fulfilling their role as anchor institutions and trusted service for providers for their local businesses.

## Higher Education – Diverse, Employment-focused, Value for Money

Our universities generate vital research and through their teaching serve critical social and economic functions across the country. However, with high tuition fees, escalating student debt and quality varying hugely across courses, there is a danger that young people are dissatisfied with their experiences on the course and course content. For HE to maintain its reputation as a powerhouse for society and the economy, we want to see it become more **diverse, employment-focused** and more focused on offering good **value for money**.



# Our work

## Research and Policy

We believe policy should be developed from the ground up, so we use our strong [research](#) base and the evidence we collect from our [projects](#) and [delivery work](#) to develop clear [policy proposals](#) for the future.

### Research reports and practice library

We work with organisations, academics and researchers across the UK to develop our [research reports](#). While our focus is on vocational and technical education, employability and work-based learning, we also explore a range of topics across education including education technology, skills development and the principles around vocational and technical education philosophy.

### Skills shortages bulletins

Our series of [skills shortages bulletins](#) convene key organisations and academics to explore skills shortages across key areas of the economy and the future of work.

## Networks

Some examples of our [research](#) and [policy networks](#):

- **Research Review Group** which convenes more than fifty academics, researchers and foundations to digest latest research and policy development.
- **Innovative Higher Education Network** which convenes innovative providers from the Higher Education field.
- **Education policy network** which brings together policy thinkers and practitioners to horizon scan and spark collaborative, solutions-focused discussions around policy reform.
- **Parliamentary Researchers Network** which brings together cross-party parliamentary researchers to identify latest research, share understanding and stimulate lively debate on current education research and policy.

## Learning from the past

Our regular reviews explore historic policy initiatives that have influenced and driven change across the vocational and technical education system. So far, we have explored past policies such as the Education Maintenance Allowance (EMA), Young Apprenticeships, Connexions, and Entry to Employment among others. By [learning from the past](#) we hope to understand how previous policies worked, what went well, what were the challenges, and the lessons we can learn in current policy moving forward.

## “Our plan” policy reports

So far we have published a series of case studies and [policy reports](#) outlining our vision for: Higher Education; Further Education; Schools and 14-19 education; and apprenticeships. These reports bring together published research, stakeholder perspectives and case studies to reflect on key debates and consider policy recommendations.



# Grant projects

## Grant funds

We support a number of innovative and diverse projects with grant funds. The Edge Innovation Fund launched in September 2021 and more details including a prospectus outlining details of eligibility, criteria, amount of funding available and the application process are available [online](#). Details of previously funded projects with organisations such as Eden Project Learning, the Barbican Centre, Yeovil College and many others can also be found on the [website](#).



## Supporting the Association of Colleges' Beacon Awards

Edge is a long term supporter of the Association of Colleges' [Beacon Awards](#) which highlight the breadth and quality of education in colleges throughout the UK. A case study from [Strode College](#), our most recent winner, on their Historic Environment Advice Assistant Higher Apprenticeship can be seen on our website along with our recent report on the [impact of winning college awards](#) such as the Beacon awards.

## Supporting the Edge Hotel School

Edge is a founder partner of the [Edge Hotel School](#), situated within the University of Essex. The Hotel School supports industry engaged education enabling students to study for accelerated honours degrees whilst working alongside professionals at the commercial 4\* Wivenhoe House Hotel.

You can read about some of the students and alumni on the Edge website and an independent evaluation of the Edge Hotel school [here](#).

# Communications

## Media

Draw on our expert knowledge, make sense of research data and find real life examples of good practise. Edge offer spokespeople and case studies for expert comment and analysis on matters facing education. Get in touch to discuss your requirements.

## Events and webinars

Edge deliver a busy calendar of [events](#) and [webinars](#) throughout the year exploring topics from the purpose of education to assessment reform, employability and the future of education. Get in touch to partner with us or put forward a speaker.

## Our current campaigns

**Assessment reform:** We bring together everyone with an interest in reforming assessment and join up all the great strands of work taking place in this area.

**The environment and education:** Edge encourage the integration of the environment as a context for learning. Having worked in this space for nearly twenty years, Edge is well-positioned to share the work of our partners, projects, methodologies and those with vision in this space.

**Protect Student Choice:** We have joined with 10 leading education bodies to urge the Government to re-think its plans to defund Applied General Qualifications, including BTECs and move to a system where students will have to choose between a binary academic or occupational route Post 16. Following a consultation which closed in January the Government is planning to respond soon and it is widely believed that funding for Level 3 courses will be confined to A levels and the newly introduced Technical Levels. #ProtectStudentChoice.



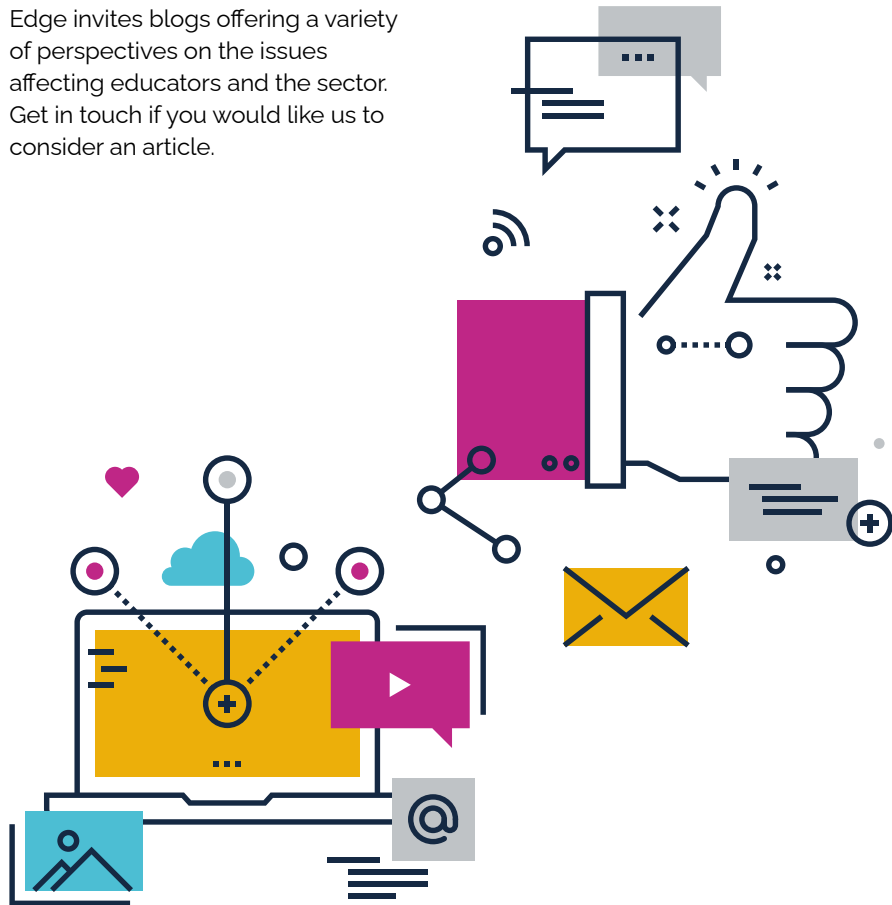
## Contribute to our channels

### Podcasts

Edge produce two distinctive series of podcasts anchored by Director of Projects and Operations, Jane Samuels and Executive Director Olly Newton. In each episode of [Tea and EDTalk](#) Jane explores a project that has received funding from Edge and finds out what it takes to be successful. In [Rethinking Education - The Edge Podcast](#) Olly talks to guests with a fascinating take on one of the key issues facing education today.

### Blog

Edge invites blogs offering a variety of perspectives on the issues affecting educators and the sector. Get in touch if you would like us to consider an article.



### Newsletter

Each month Edge circulate a news update to our database of over 6,000 subscribers.

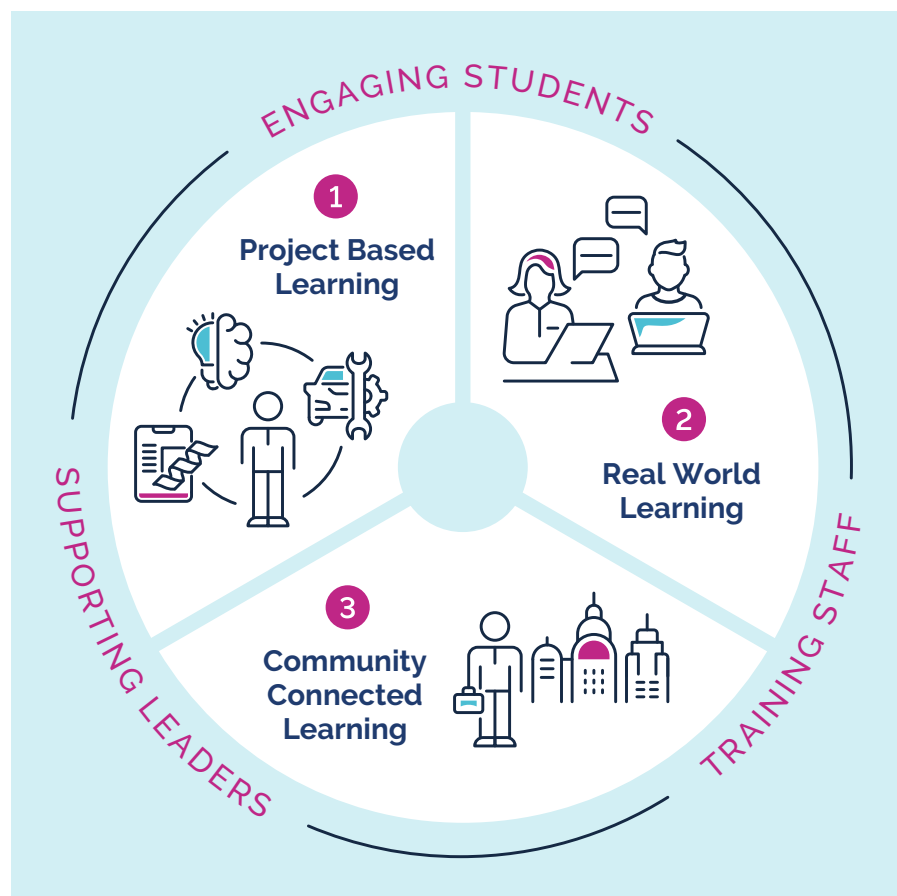
### Education Comms network

Our education communications network is a mutually supportive network of senior comms leaders working across education. We bring people together who have a diverse range of skills, knowledge, and expertise, to stimulate conversation, garner support, and take part in joint communications to help shape the future of education policy.

# Edge Future Learning (EFL)

## Our model

Building on our [strong evidence base](#), policy development, and portfolio of innovative projects, [Edge Future Learning](#) helps schools and colleges broaden and transform education, making it relevant to the twenty-first century. Our model is based around three key ingredients which help bring learning to life: [project based learning](#), [real world learning](#) and [community connected learning](#).



## Networks

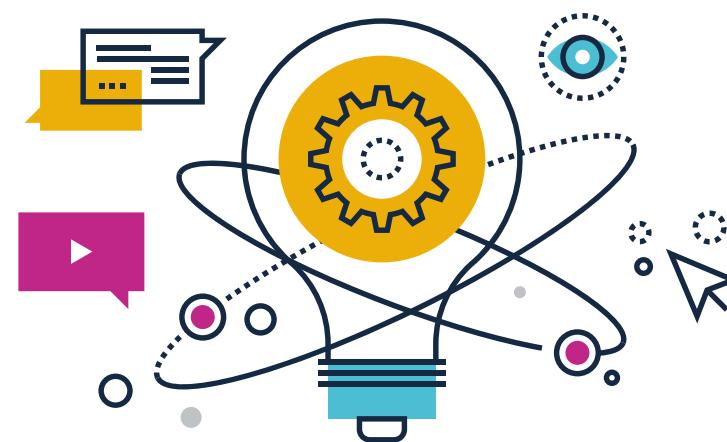
We work closely with our [Edge Future Learning Leaders](#) - pioneers of effective, innovative approaches across the UK - to distil learnings and help others to adopt and adapt good practice. Our wider network of Edge Future Learning Partners brings together leading experts from across the world whose insights and training can support you to embed deeper learning within your school or college.

## Teacher externships

Our [teacher externship training](#) supports meaningful employer engagement in schools and colleges. A Teacher Externship sees teachers/lecturers visiting a local employer observing how their subject is used in business and discussing different career pathways relevant to their subject. They then plan a project linked to the curriculum, or develop curriculum-based resources, using the business they have connected with as the context and setting. This then enhances students understanding of the relevance of the curriculum, develops their employability skills, prepares them for the workplace and helps them make informed career choices.

## EFL training

We offer a variety of [live and on-demand training](#) and events related to the three principles of community connected learning, project based learning and real world learning. We can also work with your team to create bespoke CPD, training, and coaching in collaboration with our EFL Partners.





## Come join us!

For regular updates, sign up to join the [Edge Community](#)

Come and be inspired at one of our regular [events](#)

Meet your tribe at our [research, policy and communication networks](#)

Sign-up for [training](#) with our Edge Future Learning team

Engage in our discussions and share our work on social media







Visit [www.edge.co.uk](http://www.edge.co.uk) to find out more.

The Edge Foundation  
44 Whitfield Street  
London, W1T 2RH

T +44 (0)20 7960 1540  
E [enquiry@edge.co.uk](mailto:enquiry@edge.co.uk)