

SEEDING CHANGE

THE ENVIRONMENT AS A CONTEXT FOR LEARNING



Emma Hardy MP



BUTTERFLY PROJECT

WE WANT EDUCATION TO BE RELEVANT



GREEN ENLIGHTENMENT



Coastal modules, art

An important part of education is learning about yourself in the context of your environment

AT EDEN THERE IS A HUGE RANGE OF PLANTS
Easy to find examples in the biomes



GROW
GEORGE LAMB



ASHOKA
SHAUN MCLNERNEY



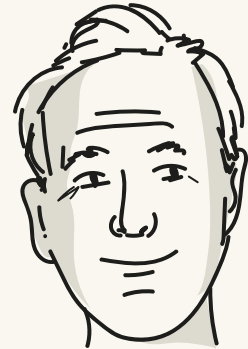
EDEN
SIR TIM SMIT

GROUND

THINK

FLOW

HEAL THE SOIL, HEAL THE SOUL



Keynote

SIR TIM SMIT

THE NEXT 10 YEARS WILL BE SHOCKING



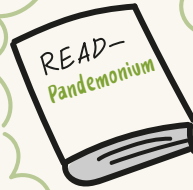
OUR CITIES WILL BECOME VILLAGES AGAIN

BIG AGRICULTURE WILL DIE



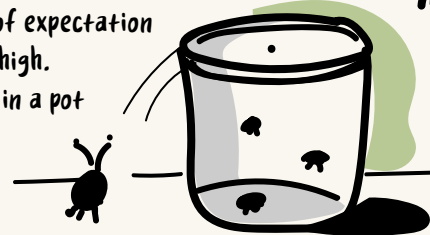
The Pandemic has been good for the environment

WE ARE STARDUST

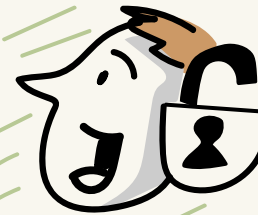


MESSAGES for TEACHERS

Set the level of expectation from children high.
Fleas jumping in a pot



WE MUST DARE TO DREAM BIG ABOUT EDUCATION AND THE ENVIRONMENT



DIG DEEPER

Unlock the potential that exists inside all children



WE NEED TO ASK FOR 'DOING GOOD'

GET CULINARY LITERACY UP



LEARNING NEEDS TO BE RELEVANT

STAND OUT LESSONS

MORE OPPORTUNITIES for REFLEXIVITY

CHANGE = OPPORTUNITY

PUT YOUNG PEOPLE IN THE DRIVING SEAT

TEACHERS-REMEMBER YOU ARE IMPORTANT



More real world & context rich learning

HUGE BIODIVERSITY GAIN IN THE NEXT 10 YEARS



FARMERS WILL BECOME OUR STEWARDS



LEARN TO COOK AND GROW THINGS

#EAL20

Visual © EleanorBeer 2020